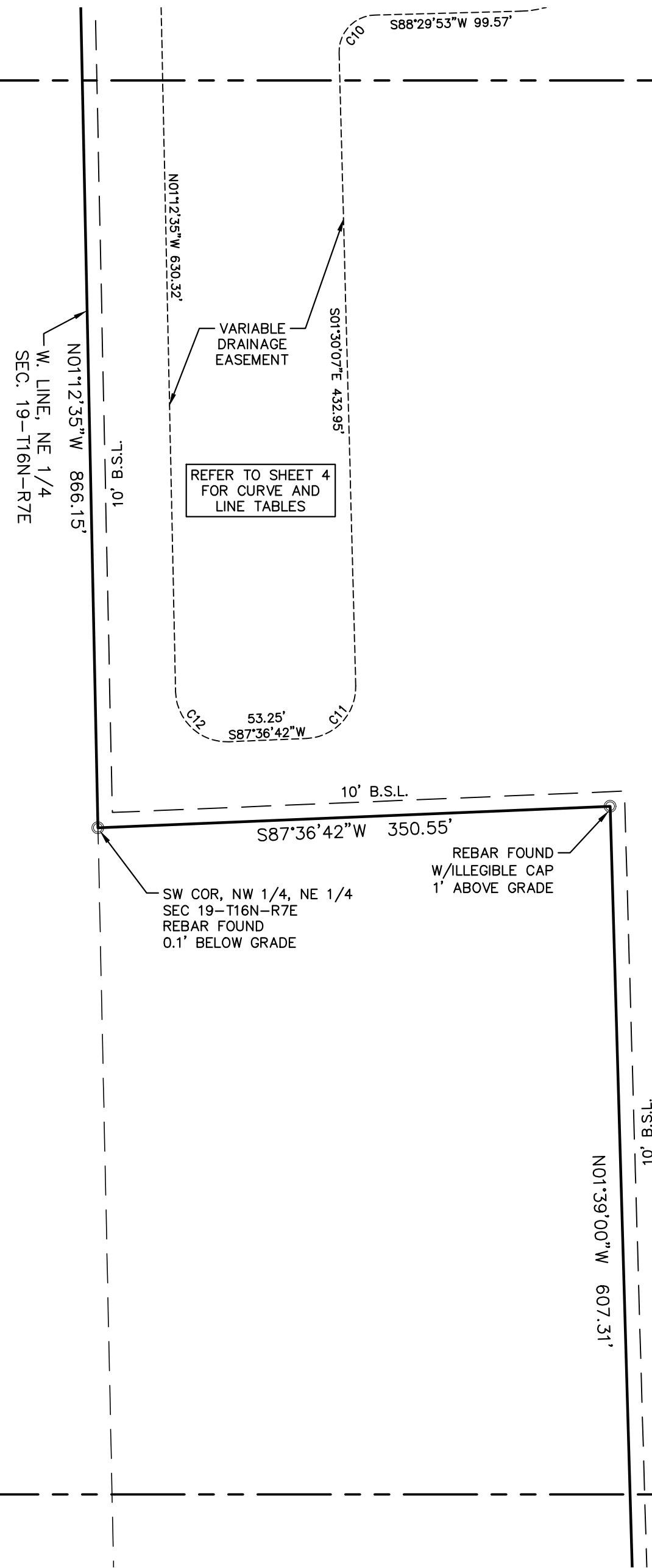
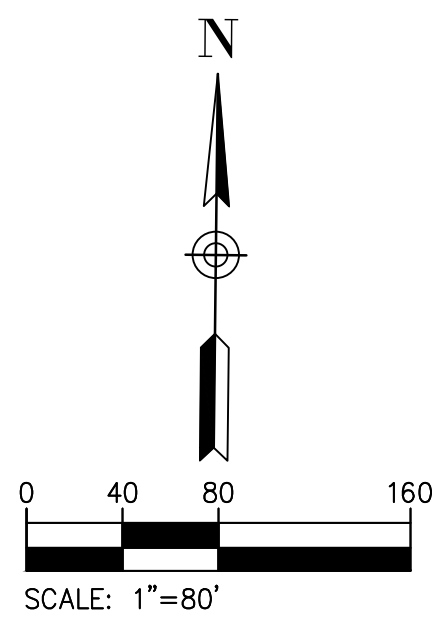
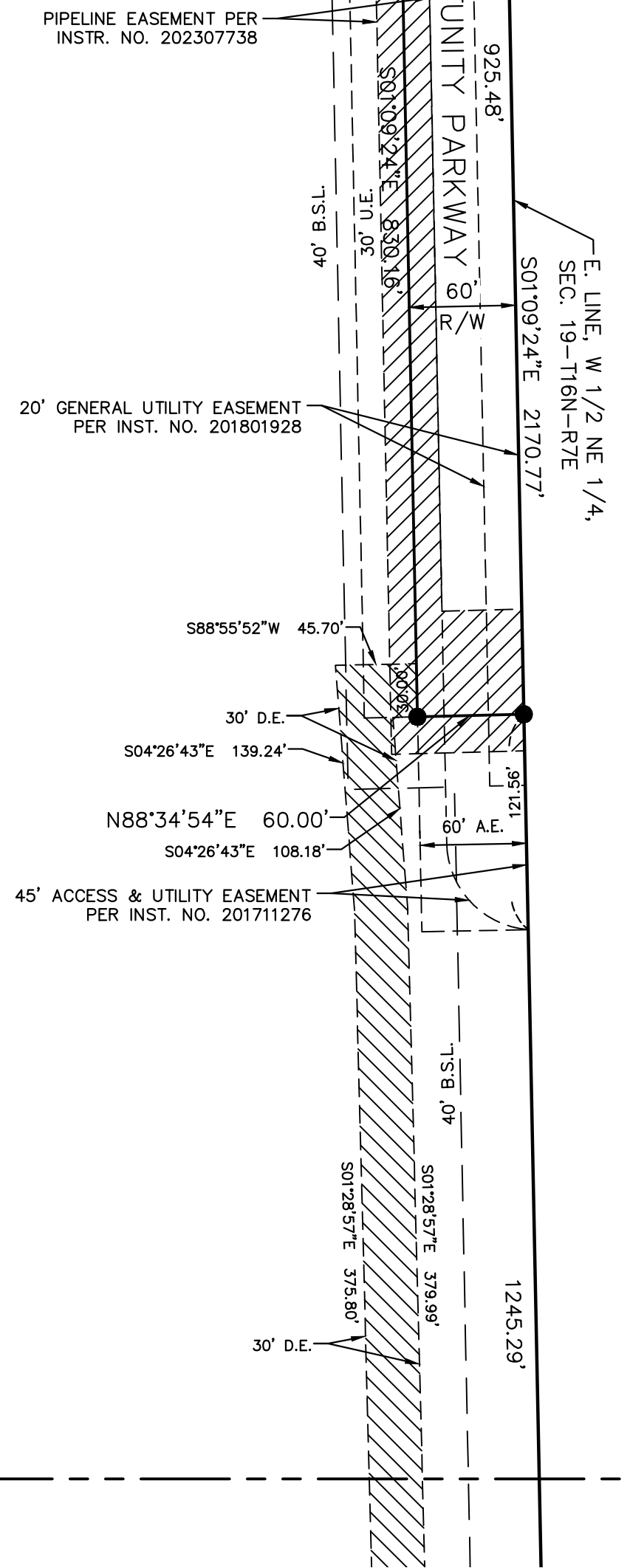


MATCHLINE—SHEET 1

MATCHLINE—SHEET 2



LOT 1
 2,753,394 S.F.
 ±63.29 ACRES
 1321 OPPORTUNITY PARKWAY



MATCHLINE—SHEET 2

MATCHLINE—SHEET 3



410 W. OAK STREET, SUITE 9B
 ZIONSVILLE, IN 46077
 (317)344-2822

THIS SURVEY PREPARED FOR:

Kimley»Horn

2023 KIMLEY-HORN AND ASSOCIATES, INC.
 250 EAST 96TH STREET, SUITE 580,
 INDIANAPOLIS, IN 46240
 PHONE: 317-218-9560
 WWW.KIMLEY-HORN.COM

K&G PROJECT NO. 210111
 LAST REVISED 09/13/2023

LEGEND

- REBAR SET WITH YELLOW CAP STAMPED "K&G LS FIRM 0141"
- MAG NAIL SET
- B.S.L. BUILDING SETBACK LINE
- R/W RIGHT-OF-WAY WIDTH
- D.&U.E. DRAINAGE & UTILITY EASEMENT
- S.S.E. SANITARY SEWER EASEMENT
- D.E. DRAINAGE EASEMENT
- VAR. VARIABLE
- U.E. UTILITY EASEMENT
- A.E. ACCESS EASEMENT

EASEMENT LEGEND

- PIPELINE EASEMENT PER INSTR. NO. 202307738
- 30' DRAINAGE EASEMENT

OWNER: SHEAR GF1, LLC
 SOURCE OF TITLE: INSTRUMENT NO. 202207378

**PROGRESS PARK
 SECTION 4**
 Sec. 19-T16N-R7E
 City of Greenfield, Hancock County, Indiana